

## 1 September 2023

Tēnā koutou katoa,

This week has been a busy one at KPS with our Year 7-8 students participating in the Senior Winter Tournament and our student-led conferences being held over the last two days. Teachers, and I'm sure whānau as well, were impressed with how our tamariki have articulated their learning and were able to use part of our learner pathway. If you weren't able to make it, please get in touch with classroom teachers and arrange a time to talk through your child's goals.

### Our Create and Relate Programme

I wanted to give you an update on how this programme is progressing and supporting students at KPS. We have conducted a survey of the Create and Relate Programme and it is showing that students are very much enjoying the activities that An-Charline, Patricia and Sean are running. Our school data is showing that there are less negative interactions at morning tea and lunchtime. This is supporting more on task learning and calmer classrooms during the day.

### Pasifika Meeting

We are excited to have Latu To'omaga come and host a meeting for our Pasifika community on **Wednesday 20 September**. Latu is a champion of health and wellbeing and supports schools to better understand the needs of its Pasifika community. This will be a great opportunity for you to share with us how we can support your children. We will start the evening with food at 5:30 followed by our meeting at 6pm. Please put this date into your diary.

### Year 7 and 8 Winter Tournament

Students had a great day at the Senior Winter Tournament. Our students participated in netball, rippa rugby and football. They enjoyed competing against other schools and showed their TEAM values throughout the day. Ka mau te wehi.

Dates	
TERM 3	
<b>Jul</b>	
17	Term 3 Begins
<b>Aug</b>	
2	Storyline Author Visit
22	Junior Winter Tournament
28	Bee Healthy Dental Van onsite
29	Senior Winter Tournament
30	Student-Led Conferences
31	Student-Led Conferences
<b>Sept</b>	
4	BOT Meeting
11	Māori Language Week
12	Kapiti College - Option Day
22	Term 3 Ends
<b>Oct</b>	
9	Term 4 Begins
<b>Dec</b>	
14	Term 4 Ends



## Disco - Wednesday 6th September

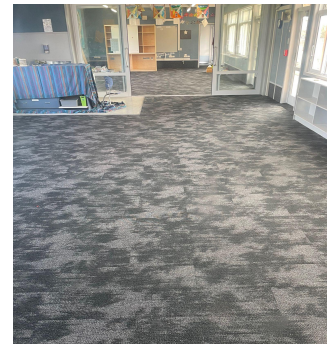
We are excited about the KPS Disco happening next week. It is going to be run a little differently this year as it is a fundraiser for the Cancer Society. Therefore, there will be an entry fee of \$5. Starting at 5 to 6pm for the juniors and 6.15 to 7.45pm for the seniors. Food will be available for purchase at the event. We will look forward to seeing you there for a great night.

## Māori Language Week

In two weeks time, we will be celebrating Te Wiki o te Reo Māori (Māori Language Week). If you would like to contribute by coming and sharing some learning with our tamariki, please contact your child's teacher. This could be a waiata, poi, sharing a taonga that you have, teaching a game, anything really. We look forward to hearing from you to support our tamariki.

## Montessori Classrooms

As always, these things take much longer than we are told by our tradies but we are nearly ready to reopen Ranginui in Room 10 and 11. The carpet has been laid and the final touches are being done so watch this space. It is like we are getting brand new classrooms and we are excited to move back in. We will communicate final moving dates once we know what they are and will ask for some volunteers to support the move back in.



## Student Corner - we continue with the theme of writing fairytales.

### *Little Red Riding Hood*

*Once upon a time, there lived a little girl strolling through the woods to visit her grandmother. Until she encountered a wolf, but not just any wolf, a big bad one who sought for food to feed his "family". "Hello little girl, what are you doing out in the woods all alone?" The wolf says in a voice as friendly as he could muster. "I'm on my way to see my grandma who lives near the brook," Little Red Riding Hood replied. After a long chat she realised how late and quickly excused herself, rushing down the path to her grandma's house.*

*By Matai*

I will be away for 3 days on the 11, 12 and 13 of September at the annual principal's conference. If you have any pressing matters, you will be able to get in touch with Liz Williamson.

**Ngā mihi nui**

**Brent McDowell**  
**Principal**



**Kapiti Primary School takes no responsibility for any notices which appear under the following sections**

## HELD AT KAPITI PRIMARY SCHOOL:

**Seido Karate Kapiti** Kids Class 7- 12 years Thursday 4.45 - 5.30 Beginners Class 12 years - adult Thursday 6pm - 7pm Kapiti Primary School Hall All welcome, any level of fitness or ability. A great family activity. Karate is a great way to challenge yourself both physically and mentally Call/text Karen: 021 1141958 [www.facebook.com/SeidoKarateKapiti](http://www.facebook.com/SeidoKarateKapiti) First three classes free.

## OTHER COMMUNITY NEWS:



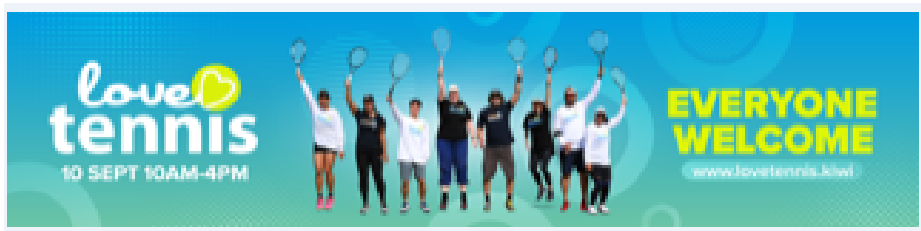
Due to the impact of COVID and staff shortages, unfortunately sKids Kapiti after school care will be closed for the foreseeable future. However, we continue to run a pick-up service from Kapiti School and take the children to sKids Kenakena, John Roger Hall, Te Kupe Road, Paraparaumu Beach. The sKids Kapiti Holiday Programme will continue to run from Kapiti School Hall. We are now taking bookings for Term 4 2023 from sKids

Kenakena. **For more info, please call Jools Da Silva on 021 0254 3249 or email [jools@skids.co.nz](mailto:jools@skids.co.nz)**



We have exciting news! Metlink is introducing new fares, with new concessions for children and young adults from 1 September 2023, bringing the 'half price fares for all' to an end. You can apply for this new concession from 26 August through the [Snapper portal](#).

- Children aged between 5 and 12 will be able to travel for free anytime on Metlink buses, trains and ferries\*
- Free fares for bus and trains are only available to children who have applied for the Under 13 Free Pass and have it loaded on their Green Snapper card. These free fares are NOT accessible to those paying by cash on buses and trains.
- Although the fares are free, children are still required to tag on and tag off the bus using their Green Snapper card.
- 5 to 12-year-olds with a Free Pass on their Green Snapper card cannot tag on other customers.
- You can apply for your Free Pass on your Snapper card at [Snapper.co.nz](http://Snapper.co.nz) or by calling Metlink Contact Centre on 0800 801 700 from 26 August.



Open Days to be held at Paraparaumu Beach Tennis Club, on Sunday 10th September, commencing at 10am-4pm. It's a free 'have a go day' where all ages and stages of players are encouraged to visit the club and give the sport a go.

Club Coach, Leonie Ware will lead fun filled day of tennis, with youngsters given an opportunity to try tennis Hot Shots with mini courts, nets and low compression balls. There's the chance to test skills against a ball machine or simply have a hit. Racquets will be available to use, there will be a free sausage sizzle and club members will be on hand to help get newcomers sorted.

For more information contact: Leonie Ware (Club Coach) 021 169 0603 Paraparaumu Beach Tennis Club Inc. Email: [paraparaumubeachtennis@gmail.com](mailto:paraparaumubeachtennis@gmail.com)

**GIVE IT A GO DAY!**

Are you looking for a summer sport? How about Softball? It's FUN and FAST!



**PLAY SOFTBALL**

Join us on Saturday, 16 September, for a day packed with softball excitement! Swing for the fences in our batting cage, enjoy thrilling games, and savour BBQ delights. Boys and girls, this is your chance to experience the thrill of softball firsthand. **Don't miss out on the fun at Te-Atiawa Park, Saturday 16 September 11-2pm.** See you there, ready to hit it out of the park!

For more info or to register go to:  
[www.kapitisoftball.co.nz](http://www.kapitisoftball.co.nz) | [info@kapitisoftball.co.nz](mailto:info@kapitisoftball.co.nz)  
Registration closes 30/9/23

## KAPITI SOFTBALL

Are you looking for a summer sport? How about Softball? It's FUN and FAST! We are hunting for male and female players to join us - U7s right up to Seniors. If you are a seasoned pro or a beginner, we would love to have you as part of our club! You can register online or join us at our Give it a Go day on 16 September 11-2pm. Register at [www.kapitisoftball.co.nz](http://www.kapitisoftball.co.nz) or if you have any questions, get in touch with Kyla on [juniors@kapitisoftball.co.nz](mailto:juniors@kapitisoftball.co.nz) or 027 244 8756. See you on the diamond!



**PADDY'S MART** TE HORO SCHOOL  
**COUNTRY FAIR 2023**

**SWEETS, PLANTS, BRIC A BRAC,  
CRAFTS, PONY RIDES, FOOD STALLS,  
BOOKS & TOYS, RAFFLES, BOUNCY  
CASTLES, CAKE STALLS, GAMES,  
LIVE MUSIC & MORE!**

**9 SEPTEMBER 2023  
GATES OPEN 11AM**

SPONSORED BY  
**Kelly & Co**  
REALTY

**10:30 - 1:30 PM**  
**Sunday 10th September**

**OUR LADY OF KĀPITI  
GALA**

Pony Rides • Bouncy Castles  
Kapa Haka • Food Stalls  
Games • Books • Raffles  
Entertainment and much more!

**PARISH & SCHOOL  
FUNDRAISER**

3 Presentation Way  
Paraparamu Beach

Proudly sponsored by

THE LAW CONNECTION  
**GOODMANS**  
Hayden & Georgie  
Real Estate

**SHINE ON STAGE THESE SCHOOL HOLIDAYS**

Following a successful programme in April with Camp Rock The Musical we're thrilled to be back, this time with High School Musical Jr!

The Show is a Week is a fabulous and unique school holiday programme is coming to Kāpiti in October! Show in a Week is open to any child aged 8 years – 14 years with the enthusiasm to perform on stage. No previous experience necessary! REGISTER ONLINE BEFORE 1 SEPTEMBER 2023

Contact Sarah Ferguson on 021 320 623

**SHINE ON STAGE! 2-6 OCTOBER**

Disney  
**HIGH SCHOOL MUSICAL JR.**

SHOW IN A WEEK  
HOLIDAY PROGRAMME  
FOR 8-14 YEAR OLDS

**ONTRACKEVENTS.CO.NZ/SHOWINAWEEK**

## **This Father's Day is Sunday 3 September and DADS ARE FREE at Ngā Manu!**

Bring your family to Ngā Manu this Father's Day and Dad's get in for free (adult admission normally \$15). Quote DADISFREE at the counter.

Please visit <https://ngamanu.org.nz/education-visits/> for more information.

We look forward to seeing you all at Ngā Manu soon



Address: 74 Ngā Manu Reserve Road, Waikanae, Wellington 539

Phone: 04 293 4131

**Columbus Cafe  
Mitre 10 Mega  
135 Kapiti Road  
Paraparaumu**



A get together for parents or caregivers raising children with any disabilities, health impairments or special needs. A hot drink for each adult supplied by Parent to Parent. You are welcome to order additional food and drink for yourself if you want at your own cost. Come & meet other parents of children with disabilities and special needs for support, friendship and fun. This is a safe space for family and Whānau to share and learn information from each other to help and support us along our journey. You are welcome to ask questions on issues you are struggling with or just join us for a drink in a supportive group.

This parent support group is usually held regularly on the 2<sup>nd</sup> Friday in the month.

For more information contact Sue on 027 808 3947 or [suet@parent2parent.org.nz](mailto:suet@parent2parent.org.nz)

Sue Trueman | Regional Coordinator-Wellington & RC Team Lead [www.parent2parent.org.nz](http://www.parent2parent.org.nz)

## **GRK Karate is having a Grand Opening Day**

### **Free Self Defence sessions**

At their new full time venue on Saturday 26th, August.

Come down and try a free beginners class, for kids 5yo+, teenagers and adults on :

Sat 10-11am & 3-4pm and Sun 9-9.45am.

Text/call Sensei Anthony on 0277653935 to book in.

Everyone is welcome and hope to see you there

